



8800 MODEL

FULL VIEW ALUMINUM

Stylish aluminum frames
with full view glass



8800 Clear anodized aluminum, clear tempered glass



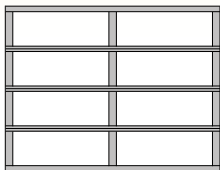
8800 Black anodized aluminum, white laminated privacy glass

1

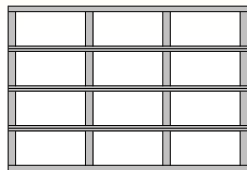
choose your style:

Full-View doors with equal panel spacing are designed to complement your home's clean, modern look.

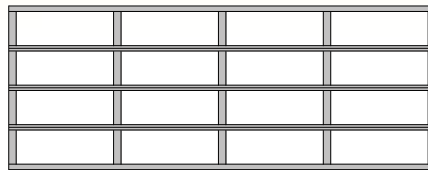
7' and 8' Tall Doors



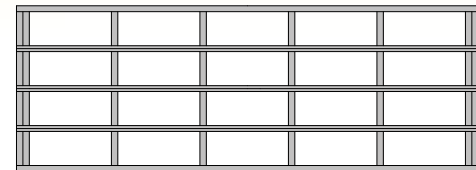
8' and 9' Wide
(2 panel)*



9' Wide
(3 panel)



16' Wide
(4 panel)



18' Wide
(5 panel)

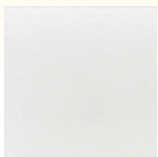
Panel spacing drawings shown are for illustrative purposes only and do not reflect actual stile and rail dimensions.
*9' wide doors: Maximum height for 2 panel door is 9' high. 2 panel door is optional – Please specify when ordering.



*8800 Dark bronze anodized aluminum,
custom bronze laminated glass*

2 choose your color:

Powder Coat Finishes



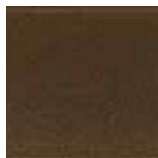
White
20% gloss



Hunter Green
60% gloss



Black
20% gloss

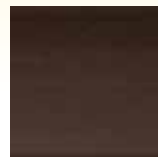


Bronze
40% gloss

Anodized Finishes



Clear
(standard)



Dark Bronze



Black

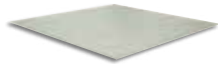
Clear anodized finish is standard. All other finishes are optional.



8800 Bronze 40% gloss aluminum, white laminated privacy glass

3 choose your glass:

A wide variety of glass colors, tints, and styles are available. Most panel styles are also available in both single pane and insulated configurations.



Clear tempered glass



White laminated privacy glass



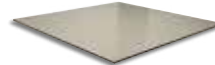
Satin etched privacy glass



Green tinted glass



Bronze tinted glass



Gray tinted glass

Solid, anodized aluminum panels are available to match clear, bronze and black anodized frames.

Custom glass layouts and other tempered glass options available. See your Wayne Dalton representative for details.

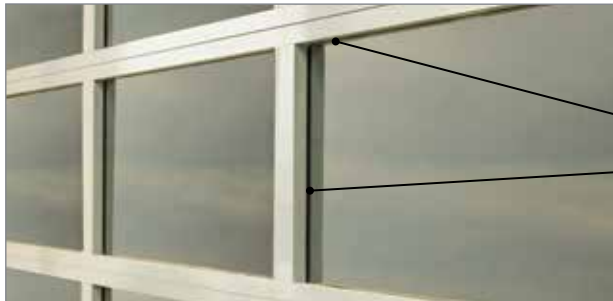
stylish. colorful. contemporary.

Wayne Dalton Full-View doors are constructed with a **rugged, anodized aluminum frame** and with equal panel spacing. The design makes the doors very **easy to maintain.**

performance features

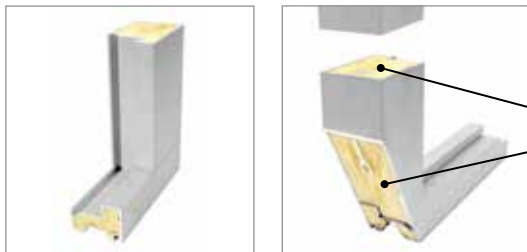


- **Tongue and Groove Joints** provide a great weather barrier.
- **Flexible Vinyl Bottom Seal** helps prevent dirt and elements from entering your garage.
- **Reinforcing Fins** along with heavy-duty track and brackets to provide years of smooth, trouble-free operation (The fins are the extruded part of the door section that are not visible through the glass.)



Aluminum rails and stiles are designed with clean edges and straight lines to create a true contemporary style.

8800 Clear anodized aluminum, clear tempered glass



Optional polyurethane insulation adds R-value* of up to 4.36

Polyurethane filled rails and stiles

R-values of Insulated 8800	9x7 door	16x7 door	9x8 door	16x8 door
1/2" insulated glass Solar Ban 70XL argon filled (R=3.125)	4.36	4.36	4.23	4.23
1/2" insulated glass (R=1.75) with polyurethane filled rails and stiles	3.18	3.17	3.02	3.02
1/2" insulated glass Low E (R=1.75) with polyurethane filled rails and stiles	3.73	3.71	3.59	3.58



Model 8800 offers a five year limited warranty on the aluminum and one year limited warranty on the glass. See full text of warranty for details.

* Wayne Dalton uses a calculated door section R-value for our insulated doors.

BEFORE



AFTER



Garage Door Design Center

www.Wayne-Dalton.com

8800 Clear anodized aluminum, white laminated privacy glass

Go to Wayne-Dalton.com today and click on Design Center. Here you can upload a photo of your home and experiment with panel designs, color options, window styles and hardware designs. Instant curb appeal awaits with just the click of your mouse! Then print the results and go online to find your closest Wayne Dalton dealer.



SOLD AND DISTRIBUTED BY:



2501 S. State Hwy 121 Bus., Ste 200
Lewisville, TX 75067
www.wayne-dalton.com

© 2014 Wayne Dalton, a Division of Overhead Door Corporation. Consistent with our policy of continuing product improvement, we reserve the right to change product specifications without notice or obligation. Item 336356