



# 9405

M O D E L

CARRIAGE HOUSE STEEL

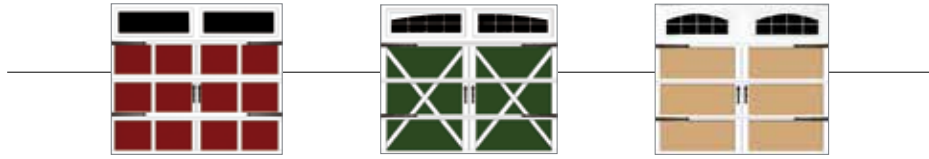
An insulated steel door with classic Carriage House designs



*Lexington panel, custom paint, Stockton III, windows, decorative hardware*

# style. efficiency. safety

defining curb appeal.



Made with polyurethane insulation and high tensile steel, the Model 9405 is rugged, low maintenance, and thermally efficient. The beautiful carriage house designs can be custom painted to add extra style and charm to the exterior of any home



*Westfield panel, custom paint*

## performance features



### Pinch-Resistant Door Panels

Pinch-resistant door panels are designed to push fingers safely out of harm's way when the door is closing.



### Thermal Efficiency

The foamed-in-place polyurethane insulation with an R-value of 10\* improves the thermal efficiency of a home and blocks unwanted street noise from entering living areas that adjoin the garage. The steel backer adds beauty and strength to the interior of the garage door.



### TorqueMaster® Plus Counterbalance

The Wayne Dalton TorqueMaster® Plus is the first counterbalance system to seal springs safely within a steel tube. It contains an anti-drop feature that reduces the risk of door free fall.

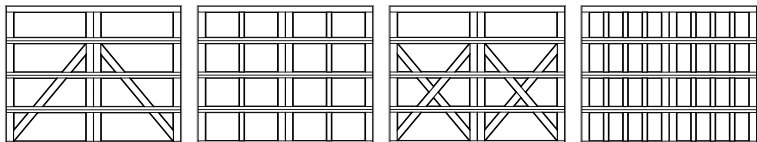


Model 9405 offers a Limited Lifetime Warranty against cracking or splitting due to rust-through and against degradation of the foam insulation. See full warranty for complete details.

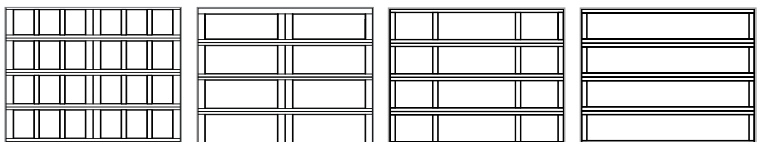
\*Wayne Dalton uses a calculated door section R-value for our insulated doors.

# 1 choose your style:

Available in 8', 9', 10', 15', 16' and 18' wide by 7' and 8' high. Doors 10' or wider come with a double car door design. Most double car door designs are equal to 2 single-car doors side by side. Please see dealer for details on double car door designs for Hampton and Camden.



Charleston Newport Lexington Oak Park



Providence Westfield Hampton Camden

# 2 choose your color:

Choose one of our 15 beautiful factory-finished colors.

## Painted Finishes



White Gray Clay Green

## Stained Finishes



Mahogany Walnut Oak Green  
Gray Clay Honduran Mahogany Red Oak

## Two-Toned Painted Finishes

All door sections will be painted in the color chosen. All trim pieces will be white.



Green/White Gray/White Clay/White

Actual colors may vary from brochure due to fluctuations in the printing process. Always request a color sample from your Dealer for accurate color matching.

# 3 choose your windows:

StyleLine window designs are available in a variety of architectural styles.



Clear II



Stockton III



Arched Stockton



Stockbridge



Cascade III



Waterton III



Arched Stockton Single



Arched Stockton Double

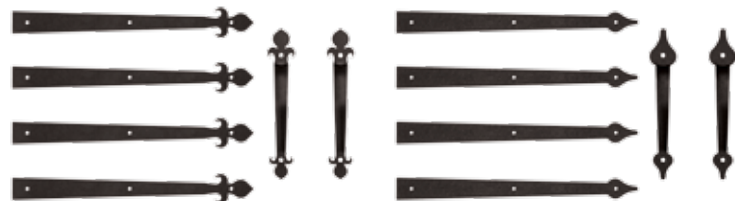
# 4 choose your hardware:

For our full decorative hardware offering, visit our website at [www.Wayne-Dalton.com](http://www.Wayne-Dalton.com)



Aspen

Barcelona



Fleur De Lis

Spear



Wayne Dalton's custom painting process offers more than 6,000 colors. See dealer for details.



AFTER



# Garage Door Design Center

[www.Wayne-Dalton.com](http://www.Wayne-Dalton.com)

Go to Wayne-Dalton.com today and click on Design Center. Here you can upload a photo of your home and experiment with panel designs, color options, window styles and hardware designs. Instant curb appeal awaits with just the click of your mouse!

*Charleston panel, custom paint  
Stockbridge windows,  
decorative hardware*



SOLD AND DISTRIBUTED BY:

2501 S. State Hwy 121 Bus., Ste 200  
Lewisville, TX 75067  
[www.wayne-dalton.com](http://www.wayne-dalton.com)

© 2015 Wayne Dalton, a Division of Overhead Door Corporation. Consistent with our policy of continuing product improvement, we reserve the right to change product specifications without notice or obligation.  
Item 325814 15M 10/15 JAR